

## ELECTIONS

🕒 The polls are open and will close at 12:30 on Thursday 5 March 2026 (in 15 days)

**Vote**  
🗳️

Continue Voting

Search posts...

Search Reset

Only show posts for which I'm eligible

Vote Now No candidates Votes Cast

Vice-President Belfast

Vote

## STEP 1

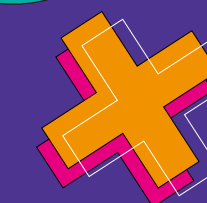
Visit  
[uusu.org/elections/vote/95/](https://uusu.org/elections/vote/95/)

Select the position  
which you want to cast  
your vote for

Click **VOTE** button

**LEAD THE CHANGE.**

POLLS CLOSE THURS 5TH MARCH, 4PM



## STEP 2

### (1 position available)

You have one vote.

Number the candidates in order of preference.

If at any stage you become indifferent to the remaining options, click the *No Further Preferences (N.F.P.)* button.

### Vice-President Belfast



Paul Johnston

Select Candidate



Gary Dennis

Select Candidate

Re-open Nominations (R.O.N.)

Select Candidate

About

Your vote

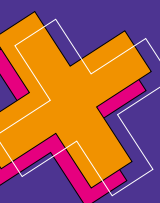
Abstain

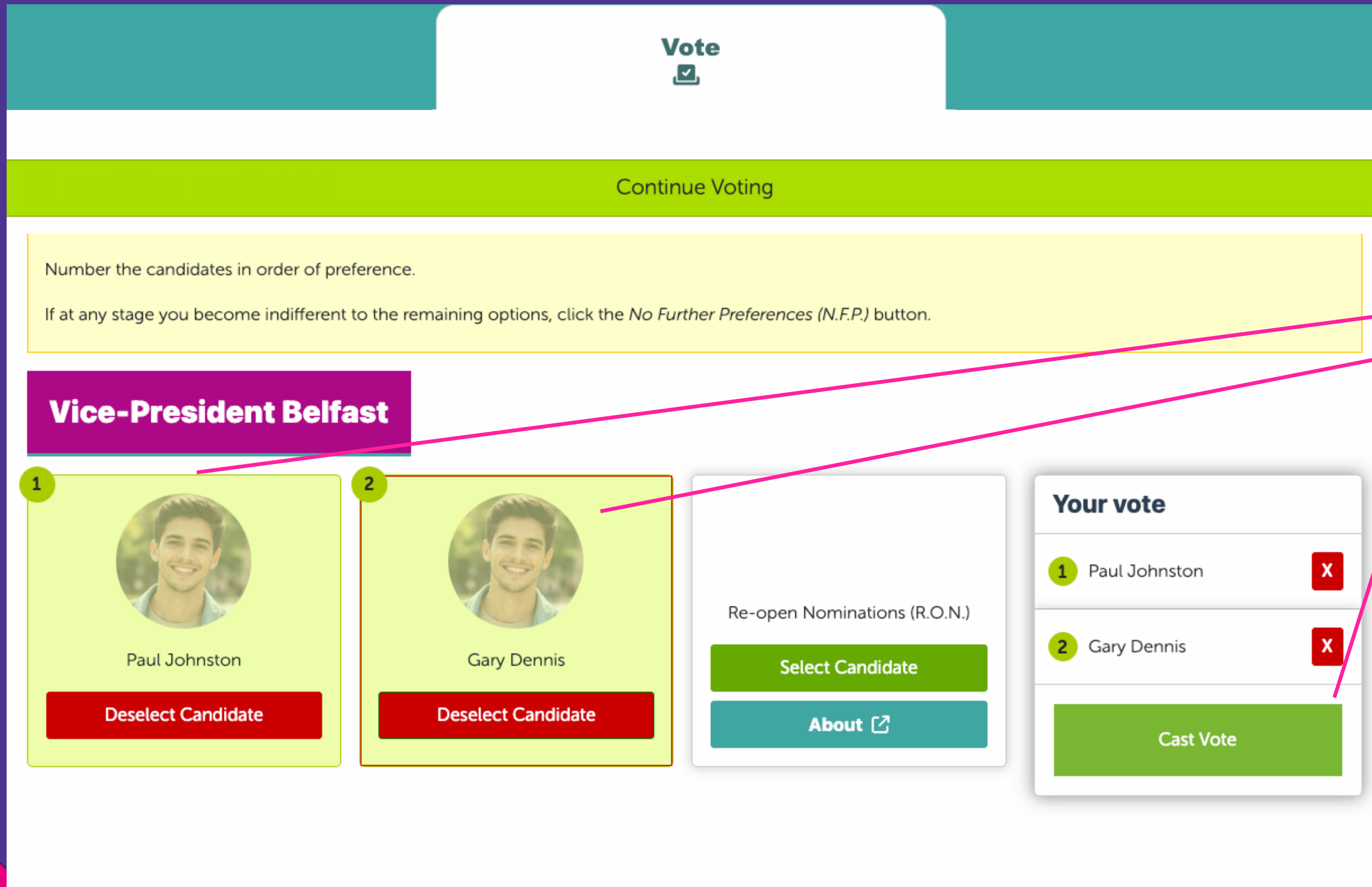
You will see a choice of candidates, you will also see an option for **RON** which is **Re Open Nominations** which you can choose if you don't wish to **VOTE** for any of the candidates and want the position to be re opened. There is also an **Abstain** button to skip casting a **VOTE**.

**LEAD THE CHANGE.**



POLLS CLOSE THURS 5TH MARCH, 4PM



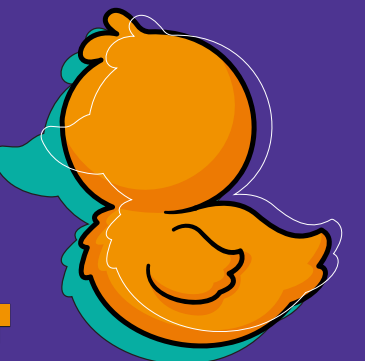


The screenshot shows a voting interface for the Vice-President Belfast position. At the top, there is a 'Vote' button with a checkmark icon. Below it is a green bar with the text 'Continue Voting'. A yellow box contains instructions: 'Number the candidates in order of preference. If at any stage you become indifferent to the remaining options, click the *No Further Preferences (N.F.P.)* button.' The main area is titled 'Vice-President Belfast' and features two candidate cards. The first card, labeled '1', shows Paul Johnston with a 'Deselect Candidate' button. The second card, labeled '2', shows Gary Dennis with a 'Deselect Candidate' button. To the right of these cards is a 'Re-open Nominations (R.O.N.)' section with a green 'Select Candidate' button and a teal 'About' button with an external link icon. On the far right is a 'Your vote' summary box showing '1 Paul Johnston' and '2 Gary Dennis', each with a red 'X' button. At the bottom of this box is a green 'Cast Vote' button. Pink lines connect the '1' and '2' labels to the explanatory text in the yellow box.

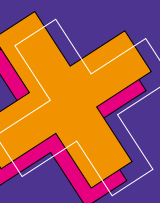
## STEP 3

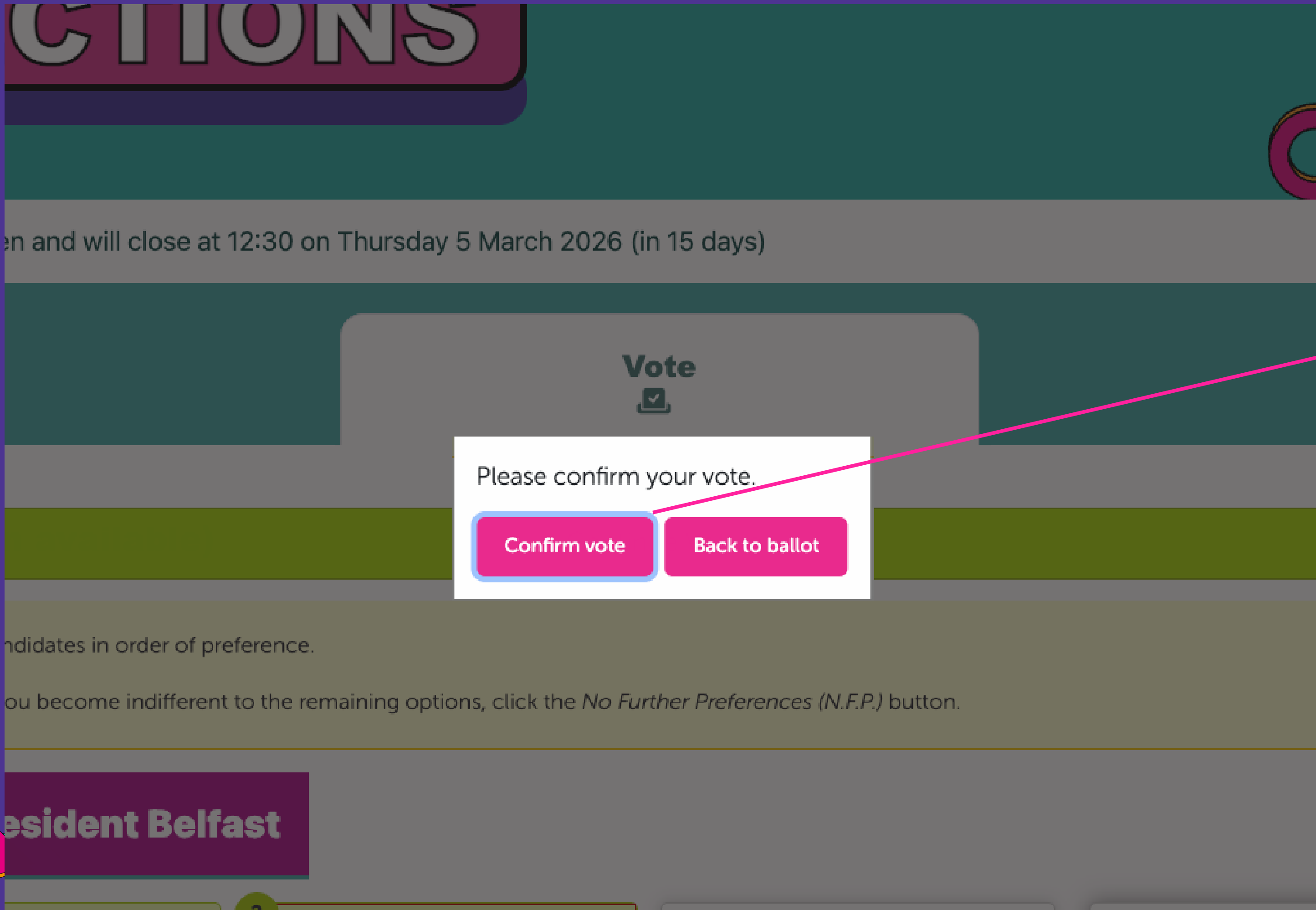
To cast your VOTE select your candidate as a **1st preference**. You can also choose a 2nd and 3rd preference. When you are happy with the order of your preferences click 'Cast Vote'

LEAD THE CHANGE.



POLLS CLOSE THURS 5TH MARCH, 4PM





## STEP 4

Finally click 'Confirm Vote' to cast your Vote. Congratulations you have just taken part by having your say in our Leadership Elections. Look out for results this Thursday 5th March.

LEAD THE CHANGE.



POLLS CLOSE THURS 5TH MARCH, 4PM

